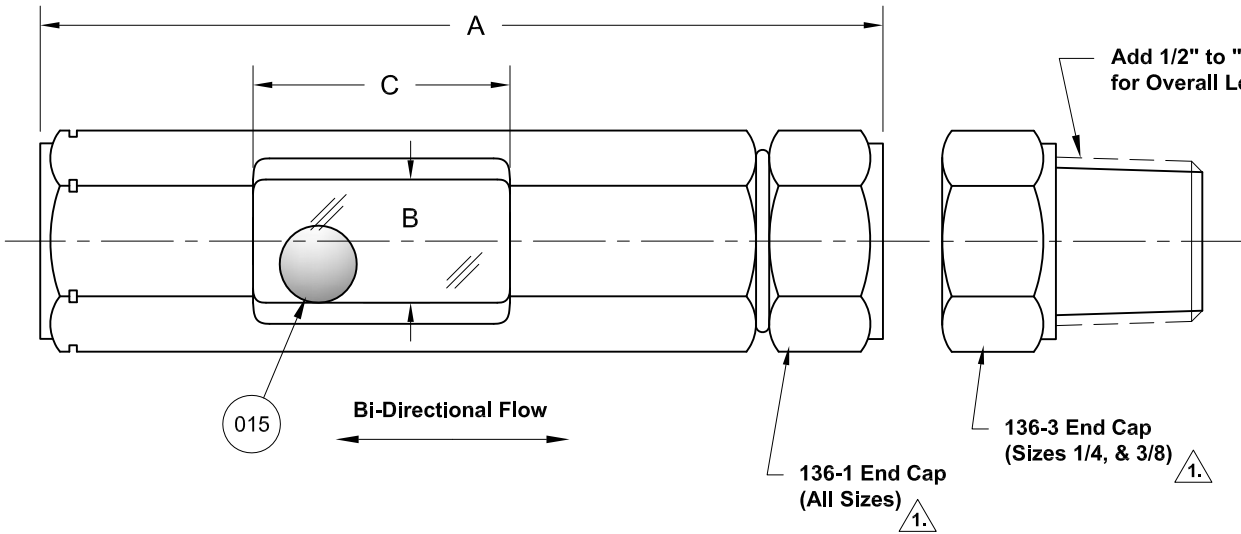
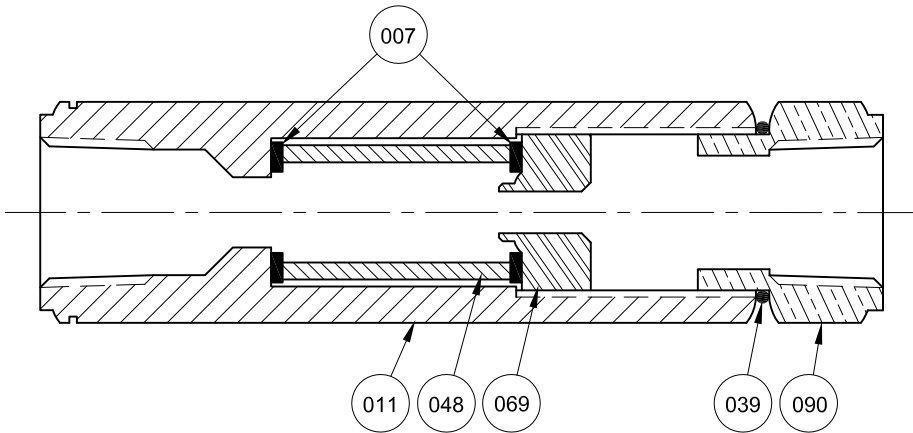


REVISIONS			
Rev.	Modification	Date	Done By



BILL OF MATERIALS					
* - Denotes an Optional, Non-Standard Material					
No.	Name of Part	Qty.	Material	Max. Temp. (°F)	Material Grade/Notes
011	Body	1	Brass		
007	Gaskets	2	Buna-N	250	
			*Viton®	400	Fluoroelastomer
			*Neoprene	225	
			*EPDM	250	Ethylene Propylene
015	Ball ₂	1	Nylon	180	
039	O-Ring	1	Buna-N	250	
			*Viton®	400	Fluoroelastomer
			*Neoprene	225	
			*EPDM	250	Ethylene Propylene
048	Lens	2	Borosilicate		
069	Insert	1	Brass		
090	End Cap	1	Brass		



PRODUCT SPECIFICATIONS									
NPTF Size	A		B		C		Weight		Pressure ³ @ 150°F (PSIG)
	In.	mm.	In.	mm.	In.	mm.	lbs.	kg.	
1/8	3-11/32	85	1/2	13	1-1/16	27	0.40	0.18	435
1/4	3-9/16	90	1/2	13	1-1/16	27	0.40	0.18	435
3/8	4-1/4	108	5/8	16	1-1/8	29	0.75	0.34	425
1/2	4-5/8	117	3/4	19	1-1/8	29	1.05	0.48	380
3/4	5-1/4	133	13/16	21	1-3/8	35	1.30	0.59	345
1	6-5/16	160	13/16	21	1-1/2	38	2.35	1.07	270

- Notes:**
1. Thread Sealant is Required for NPT to NPTF Threads
 2. Ball Can Be Removed by Request
 3. Not Suitable for Steam, Gaseous, or Vacuum Service

S22A Series Configuration Choices:

Reference the Series S22A Model Number Matrix on our Website or Inquire with our Sales Team

Viton® is a Registered Trademark of the Chemours Company

JOHN C ERNST LLC.		www.JOHNERNST.com 21 Gail Ct. Sparta, N.J. USA	
Series S22A Ball Action Sight Flow Indicator			
Sheet: 1 of 1	Drawn By: WAS	Tolerances, unless otherwise noted Dec.: ± Frac.: ± Ang.: ±	Size: A
Scale: NTS	Approved By: JCW		
Dim.: Var.	Date: 13-FEB-17	Dwg. No.: SC2.0S22A.00.0.0	Rev.: --